



PLSC Sailing Instructions for Club Racing

The Organising Authority is Panmure Lagoon Sailing Club

1. **Rules**
2. Club racing will be governed by the [Racing Rules of Sailing 2017 - 2020](#) (the *rules*) and these instructions.
3. **Changes to Sailing Instructions**
 - 1.1. Any changes to the sailing instructions will be advised at the briefing of the race day
2. **Safety**
 - 2.1. The YNZ Safety Regulations are deemed to be part of the Sailing Instructions
 - 2.2. Safety requirements for all boats have been met. Any boat or sailor not meeting the safety requirements will be ineligible to compete.
 - 2.3. All crew members shall wear life-jackets or other personal buoyancy. Wetsuits & dry suits are not adequate personal buoyancy.
 - 2.4. If a competitor capsizes he has to report it at end of race and log it on the capsize sheet.
 - 2.5. **Signing On and Off when finished**
 - 2.5.1. All sailors must sign on prior to the start of the first race each day. The sign on sheets is located on the table in the Club house
 - 2.5.2. All sailors must sign off when finished racing. Sailors not intending to start the second race of the day, or sailors who retire from a race shall notify the race officer and sign off. The sign off sheet is located on the table in the Club house
3. **Race entry fee**
 - 3.1. An entry fee is payable each day of racing. The amount of the fee is shown on the official notice board and on the sign-on form.
4. **Fleets**
 - 4.1. **A Fleet:** Proficient sailors, who have participated in a Series and/or open fleet laser regatta.
 - 4.2. **Intermediate Fleet** - It is open to less experienced Laser sailors for instance sailors who have just completed a Learn to Sail. The emphasis is on fun and the objective of this regatta is to offer the less experienced sailors the opportunity to sail, participate and to practice and hone racing skills without feeling intimidated by experienced sailors.
5. **Scoring**
 - 5.1. Only the first 3 races in a day with a series race except for the Sprint Race Series will be counted, the other races will be practice races.
 - 5.2. Sprint race series all races count
 - 5.3. Dependent on how many races constitute a series, 1 or 2 races can be dropped.
 - 5.4. Competitors requested by the Sailing Committee to act as Race Officials shall be allocated their average points for the series, for that race.
 - 5.5. Competitor's individual average points will be allocated to any person not starting in a Club race due to attendance at a one of the external events supported by the Club if unsure please query it with the Club Captain.
 - 5.6. A competitor will be scored in a series with the rating of that rig that it enters for a particular race in that series, he can change rigs during the series.
 - 5.7. For the River Race, scoring will be by place by fleet, there will be no handicapping for using a different rig.

5.8. Class Ratings

The following are the class ratings applicable to boats being sailed in races controlled by PLSC.

Boat	Rating
Laser Standard	1078
Laser Radial	1101
Laser 4.7	1175
RS Aero	1028
Open Bic	1290
Optimist	1646

6. Starts

6.1. The Start procedure shall be as follows for tower starts:

10 minutes - The Race officer of the day following the briefing will advise attendees present at briefing of 10 minute Warning.

5 minutes – 5 boards will go up at the window in the tower and there will be one blast of horn

4 minutes – the 5 minute board will go down, 4 boards remaining

3 minutes – the 4 minute board will go down, 3 boards remaining

2 minutes – the 3 minute board will go down, 2 boards remaining

1 minutes – the 2 minute board will go down, 1 board remaining

30 seconds – A blank board will go up, 2 boards remaining

0 minutes – start; one blast of the horn and the blank and the 1 minute board go down

6.2. Staggered starts can occur between fleets

6.3. For back-to-back races, the first warning signal of the next sequence of starts will be preceded by a horn signal. The next signal will be a 3 minute warning for the next start sequence.

6.4. The Start Line shall be between the yellow marker buoy South of the Tower (Part of the Club House) & a mark on the Tower wall.

6.5. In some instances there could be a boat start, the location and buoy colour will be advised at briefing.

6.6. Boats whose warning signal has not been made shall avoid the starting area.

6.7. A boat starting later than 10 minutes after her starting signal will be scored 'Did Not Start'

6.8. For the Mark Foy Series, the start will be as per handicap.

6.9. Expected Start time are shown in the PLSC sailing programme if any delay the postponement flag will be raised.

6.10. For the river race, we recommend to come earlier than the usual 1 hour prior to start time as reaching the start line can take over 30 minutes depending on the wind. Do consider tidal currents at start of race as it will be difficult to go back to the line once it has been crossed.

7. Finish

7.1. A bell will be rung for the winners of the A fleet and Intermediate fleet

7.2. The Finishing Line shall be between the yellow marker buoy South of the Tower (Part of the Club House) & a mark on the Tower wall.

7.3. When there is a boat start, the finish is still done at the club finish line at the Tower

7.4. Yachts must not re-cross the finishing line in the direction of the course after finishing and clearing the finish line.

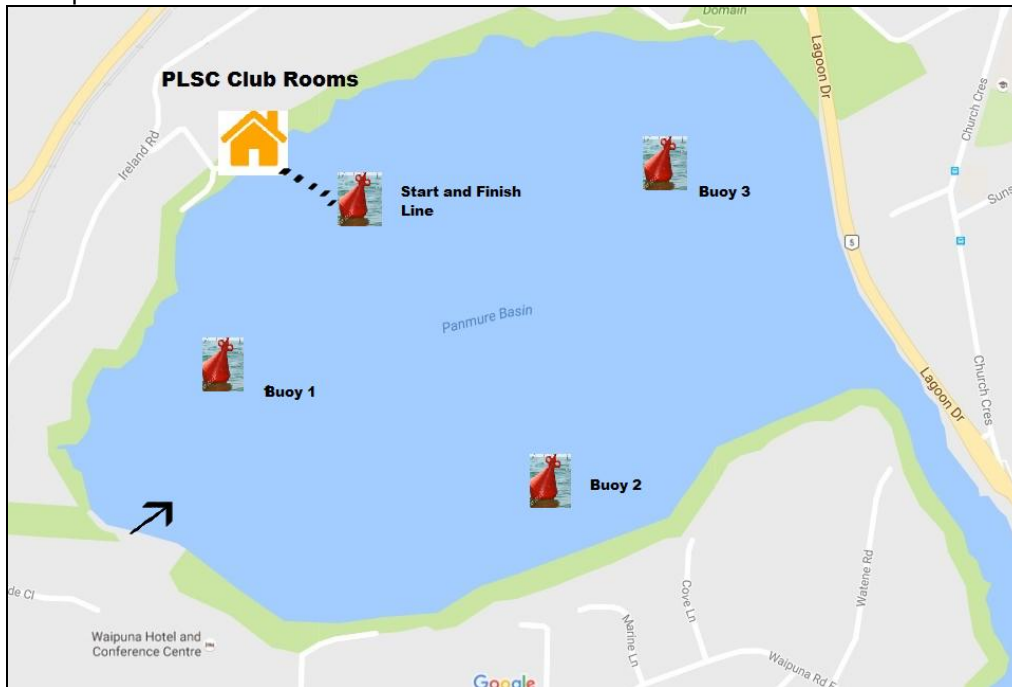
8. Marks

8.1. Marks may be of any colour and type and may be replaced when appropriate. The type of mark shall be advised to all participants at the briefing but as well on the water if the course changes before the next race.

9. Racing area

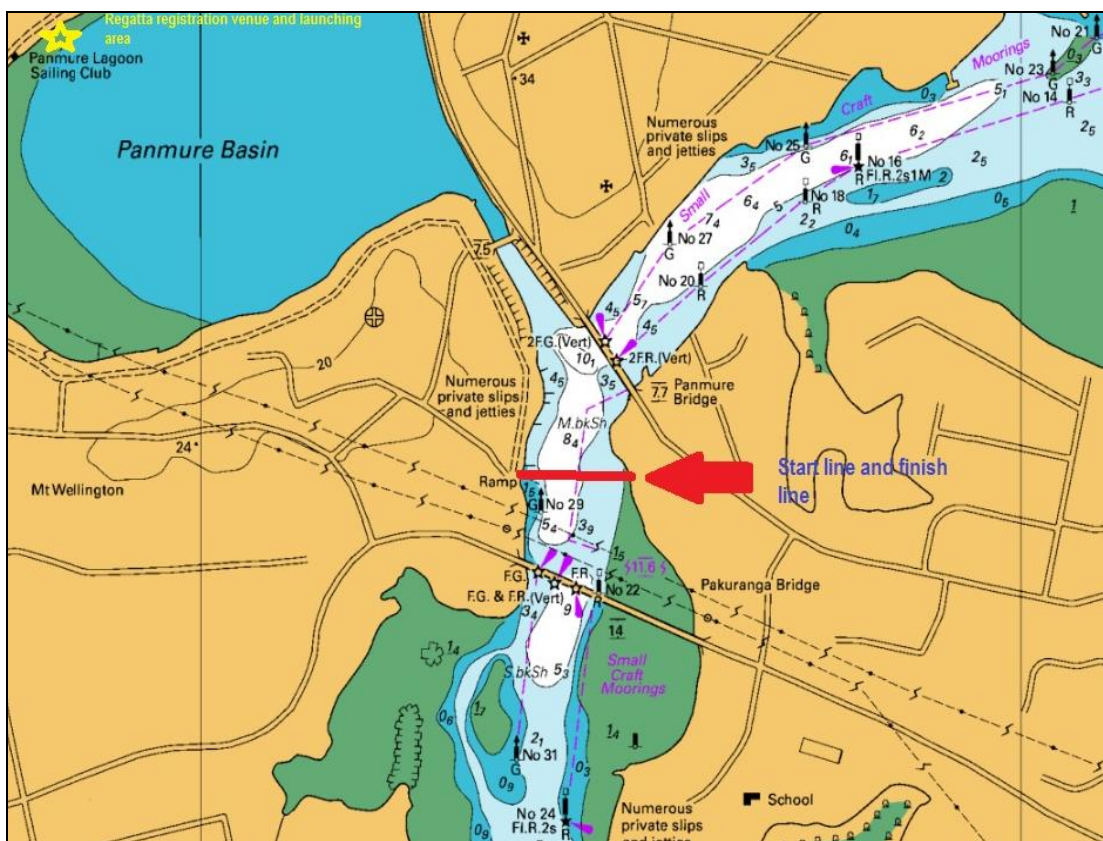
9.1. For all race Series the course will be at the discretion of the Officer on Duty,

9.2. Sprint Series course shall consist of short 15 minute windward leeward finish.



9.3. River race racing area

The River Race is a point to point race on the Tamaki Estuary. The race will begin between the green jetty off Waipuna Road East and a patrol boat, then down the Tamaki River up to Curlew Bay to the red navigation buoys leaving them to starboard, and back to the start finish line between the green jetty off Waipuna Road East and a patrol boat. Any changes to course will be advised at the briefing on the day.





Course

- 1st Leg: Green jetty off Waipuna Road East to red channel markers near the motorway leaving it to Starboard
- 2nd Leg: Red channel mark to finish at the start line

Dangers to Note

- This is a narrow navigation area with restricted movement for large vessels so give them room to safely navigate.
- Normal navigation rules will apply at all times.
- Keep clear of moored boats.
- The rowing club uses this area as well so keep clear of all rowing skiffs, dragon boats, wakas & their coach boats
- Be aware of unusual and at times severe wind currents around man-made structures e.g. bridges, buildings.
- Keep well clear of pylon structures supporting road above.

10. Recalls

10.1. Individual Recall shall be signified by one sound signal and displaying Code Flag X, in accordance with Rule 29.2.

10.2. General Recalls shall be signified by two sound signals and the displaying of the First Substitute Flag.

11. Change the Course *altering rule 33*

11.1. At a mark of the course, the committee boat will make periodic sounds and display 'C' over a Red or Green flag. The next mark lies to Port or Starboard of the original mark.

12. Shorten the Course *additional to rule 32*

12.1. On a leg of the course, the committee boat will make sounds and show 'S' over '1', meaning that the remaining course is to the NEXT mark, then to proceed **directly to the Finish**.

13. Penalties *altering rule 44.1*

13.1. One-Turn –360 degree--penalty applies when a rule of Part_2 is broken.

14. Time Limits *additional to rule 35*

14.1. In any race, a starter that has not finished **within 15 minutes** of the first boat to finish may be scored as DNF for that race.

15. Protests

15.1. Protests should be amicably settled before the end of race. If this was not settled Protest forms are available at the tower. Protests involving incidents in a session of races shall be delivered within 30 minutes of the last boat to finish the last race of that session.

16. Trophies

16.1. Trophies will be allocated as per trophy Club Series Trophy section in the document

16.2. To be eligible for PLSC trophies, the competitor must be a financial member of PLSC

16.3. Visitors who are financial members of other yacht clubs are welcome to compete in Club races but are not eligible for Club trophies.

16.4. Prospective and non financial members are entitled to race 1 time only during the season.

17. Disclaimer of liability

17.1. Competitors sail entirely at their own risk. The Race Committee, Panmure Lagoon Sailing Club and any individuals volunteering for any duties will not accept any liability for material damage or personal injury or death sustained in conjunction with, prior to, or during, any race or sailing event.

**Changes to Sailing Instructions clauses will need to be passed at a PLSC Committee Meeting.
Instructions compiled on 15th August 2016**

Club Regattas

PLSC holds several regattas:

1. RSA Laser Regatta founded in 1977
2. King or Queen of the River Race
3. Auckland Women Laser Championships (is set on a roster basis between all Auckland Clubs supporting Women Laser sailing, PLSC held the inaugural regatta in 2014)
4. Carnival Regatta to be hold in conjunction with the Panmure Fun Day
5. Closing Regatta
6. Easter Bunny Regatta
7. Mad Hatter Regatta

The RSA Regatta, King or Queen of the River Race, Auckland Women Laser Champs, Carnival Regattas will have their separate sailing instructions to adhere to. The Closing, Easter Bunny and Mad Hatter regattas will be governed by these Sailing instructions for Club racing.

Club Series Trophies

Winter Race Series

Trophies

There are 3 types of trophies to be won:



- *Whiting Cup* for A fleet sailors



- *Winter Series Intermediate Trophy* for Intermediate Fleet sailors



- *Andrew's Trophy – Junior* for A fleet Junior sailors. If no Junior A Fleet participants it can be allocated to 1st Junior in the Intermediate Fleet.

Certificates will be provided to 2nd and 3rd placings for each category.

Handicap Series

Trophies

There are 3 types of trophies to be won:



- *The Webster Shield* – Senior for A fleet sailors



- *Smith Trophy* – Intermediate Trophy for Intermediate Fleet sailors



- *Smith Junior Trophy* for A fleet Junior sailors. If no Junior A Fleet participants it can be allocated to 1st Junior in the Intermediate Fleet.

Certificates will be provided to 2nd and 3rd placings for each category.

Mark Foy Series

Trophies

There are 2 types of trophies to be won:



- *The Daval Trophy – Senior for A fleet sailors*



- *Mark Foy Junior for A fleet Junior sailors. If no Junior A Fleet participants it can be allocated to 1st Junior in the Intermediate Fleet.*

Certificates will be provided to 2nd and 3rd placings for each category.

Summer Series

Trophies

There are 3 types of trophies to be won:



- *Summer Season Points Trophy* for A fleet sailors



- *Summer Points - Intermediate Trophy* for Intermediate Fleet sailors



- *Preece Junior Trophy* for A fleet Junior sailors. If no Junior A Fleet participants it can be allocated to 1st Junior in the Intermediate Fleet. Preece Junior Trophy was donated in 1976

Certificates will be provided to 2nd and 3rd placings for each category.

Club Championship Series

Trophies

There are 4 types of trophies to be won:



- *Endeavour Trophy* – Senior for A fleet sailors



- *Club Champs Junior* for A fleet Junior sailors



- *Peterson Trophy* for Intermediate fleet sailors.

History: Life member Mr R. Peterson donated the trophy on 8/02/1984. It has been named the PETERSON TROPHY and is to be raced in the intermediate section at the time it was filling the gap that existed in the winter programme. It is now being used for the Club Champs.



- *Bill Thomas Trophy* – Intermediate for Intermediate fleet Junior sailors.

Certificates will be provided to 2nd and 3rd placings for each category.

Sprint Race Series

Trophies

There are 2 types of trophies to be won:



- *McCulloch Cup Trophy - Senior for A fleet sailors*



- *Sprint Race for Intermediate fleet sailors.*

Certificates will be provided to 2nd and 3rd placings for each category.

Wednesday and/ or Friday Night Race Series

Trophies

There are 2 types of trophies to be won:



Photo be taken

- *Worsnop Trophy - Senior- Senior for A fleet sailors*

- *Worsnop Trophy – Junior for A fleet Junior sailors. If no Junior A Fleet participants it can be allocated to 1st Junior in the Intermediate Fleet.*

Certificates will be provided to 2nd and 3rd placings for each category.

Early Bird Series

Trophies

There are 3 types of trophies to be won:



- *Secretary Senior Trophy - Senior for A fleet sailors*
- *Secretary Trophy – Intermediate for Intermediate Fleet sailors*
- *Secretary Junior Trophy for A fleet Junior sailors. If no Junior A Fleet participants it can be allocated to 1st Junior in the Intermediate Fleet.*

Certificates will be provided to 2nd and 3rd placings for each category.

River Race Series

Trophies

The River Race Series started in 1985. There are 3 types of trophies to be won:



- *Phil Brockliss Memorial Trophy* for A fleet sailors

History: Dick Brockliss, (PLSC Commodore from 1965 to 69) donated the inaugural Phil Brockliss Memorial Trophy on 15th June 2014 in memory of his son, Phil Brockliss. Phil was a founding member of the Club and sailed at the Club until 2004.



- *Intermediate River Race Trophy* for Intermediate Fleet sailors



- *Junior River Race Trophy* for A fleet Junior sailors. If no Junior A Fleet participants it can be allocated to 1st Junior in the Intermediate Fleet.

Certificates will be provided to 2nd and 3rd placings for each category.